

# COVID-19 Cases

As of Friday 5/01/2020, 5:00PM HST

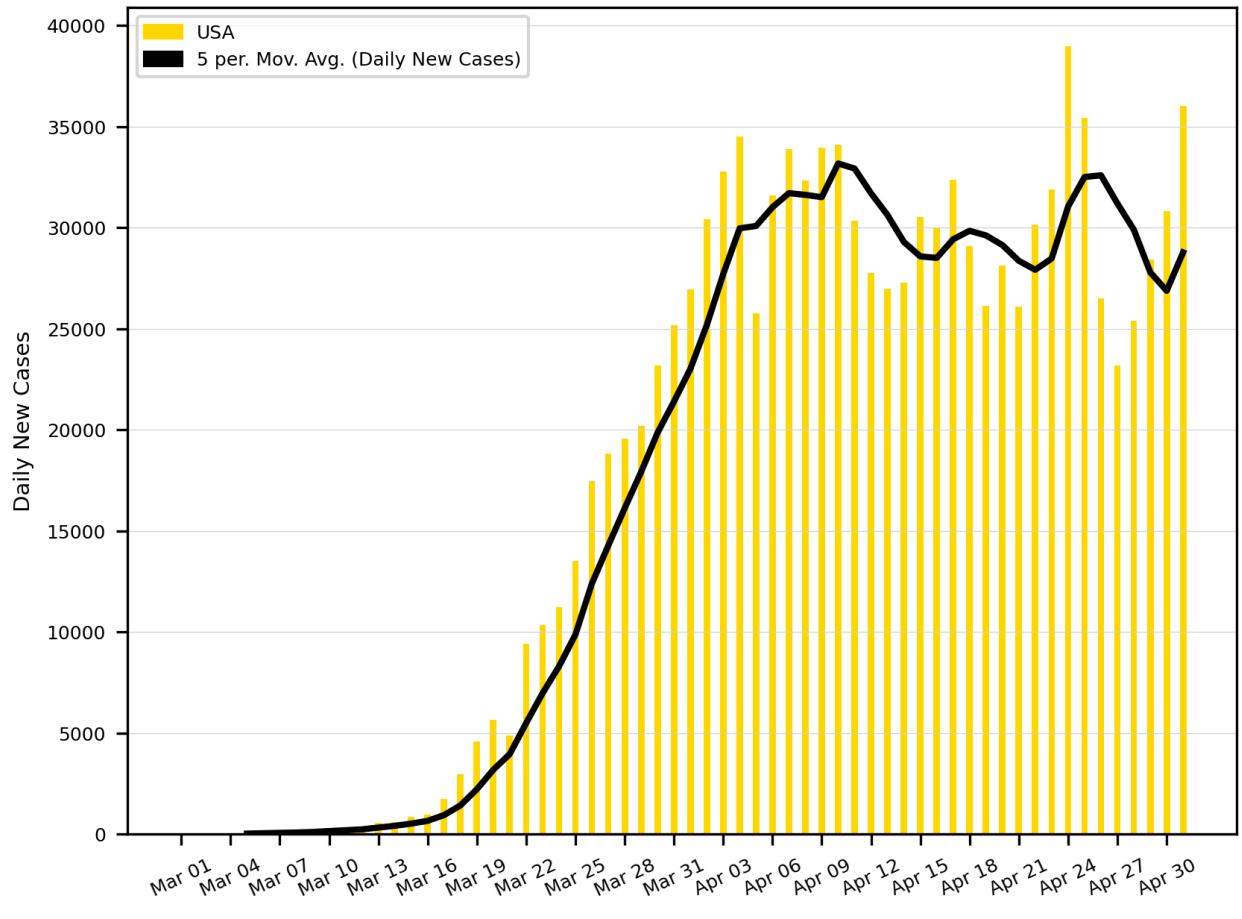
Statistics regarding daily new cases and active cases of the six countries that has the highest number of total cases, China, Switzerland, Austria, Israel, South Korea, Australia, and Cyprus.

Source: <https://www.worldometers.info/coronavirus/>

Statistics regarding daily new cases are also included for Hawaii.

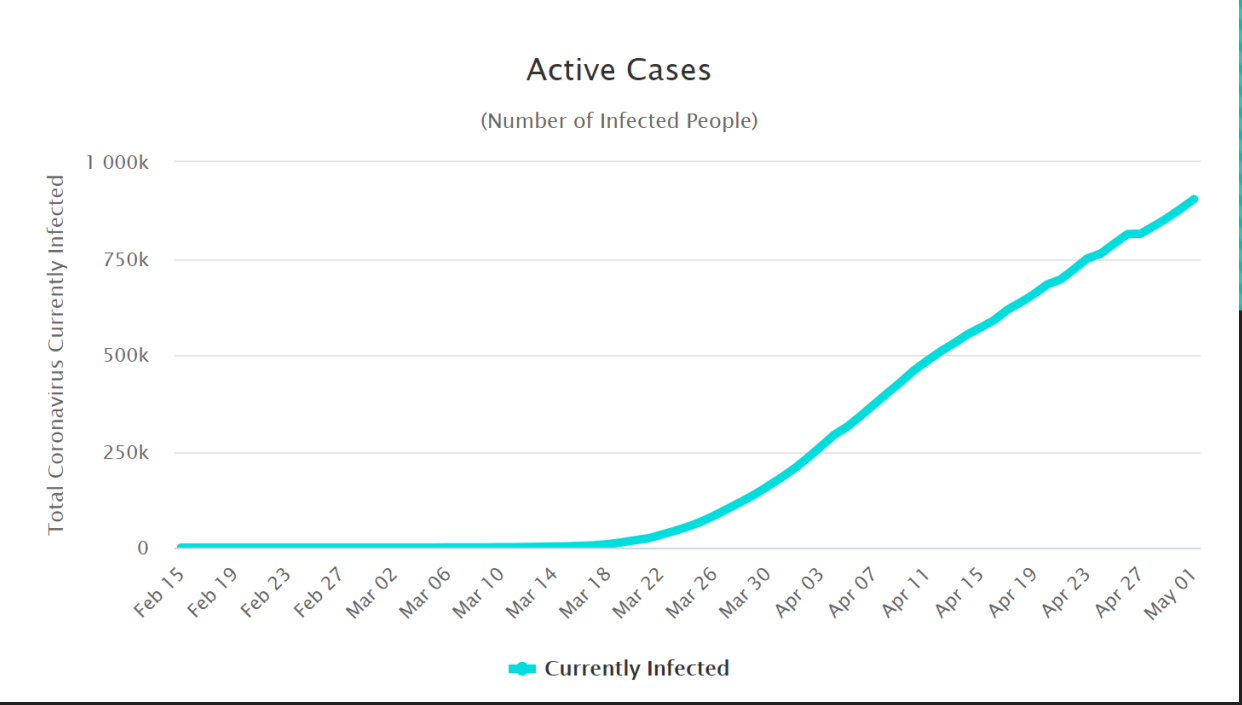
Source: <https://health.hawaii.gov/news/covid-19-updates/>

5-Day Moving Average Trendline

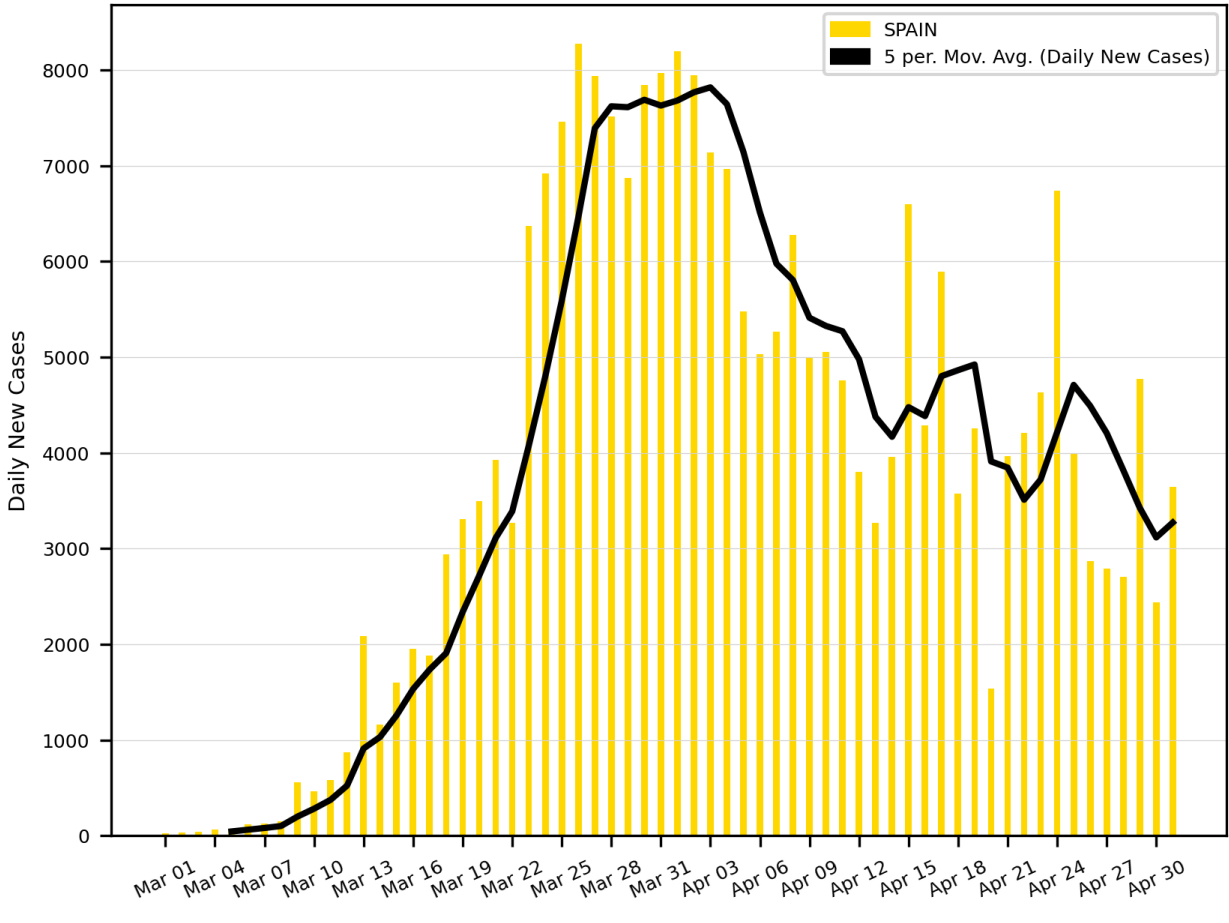


1. USA

Active Cases in the United States

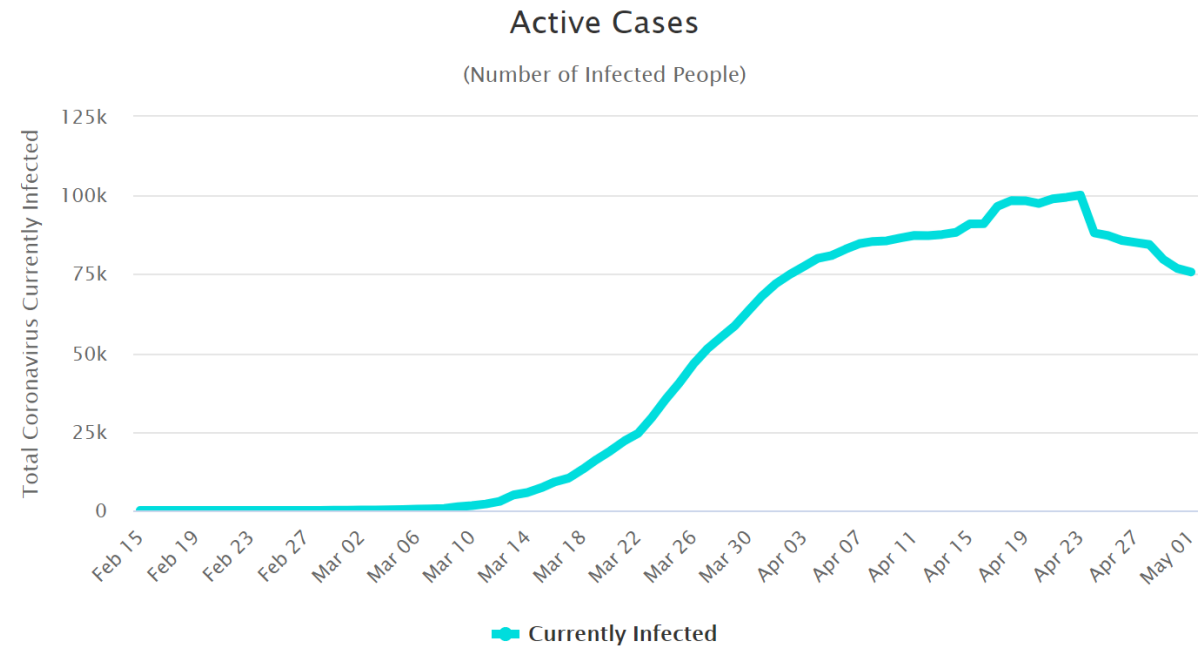


5-Day Moving Average Trendline

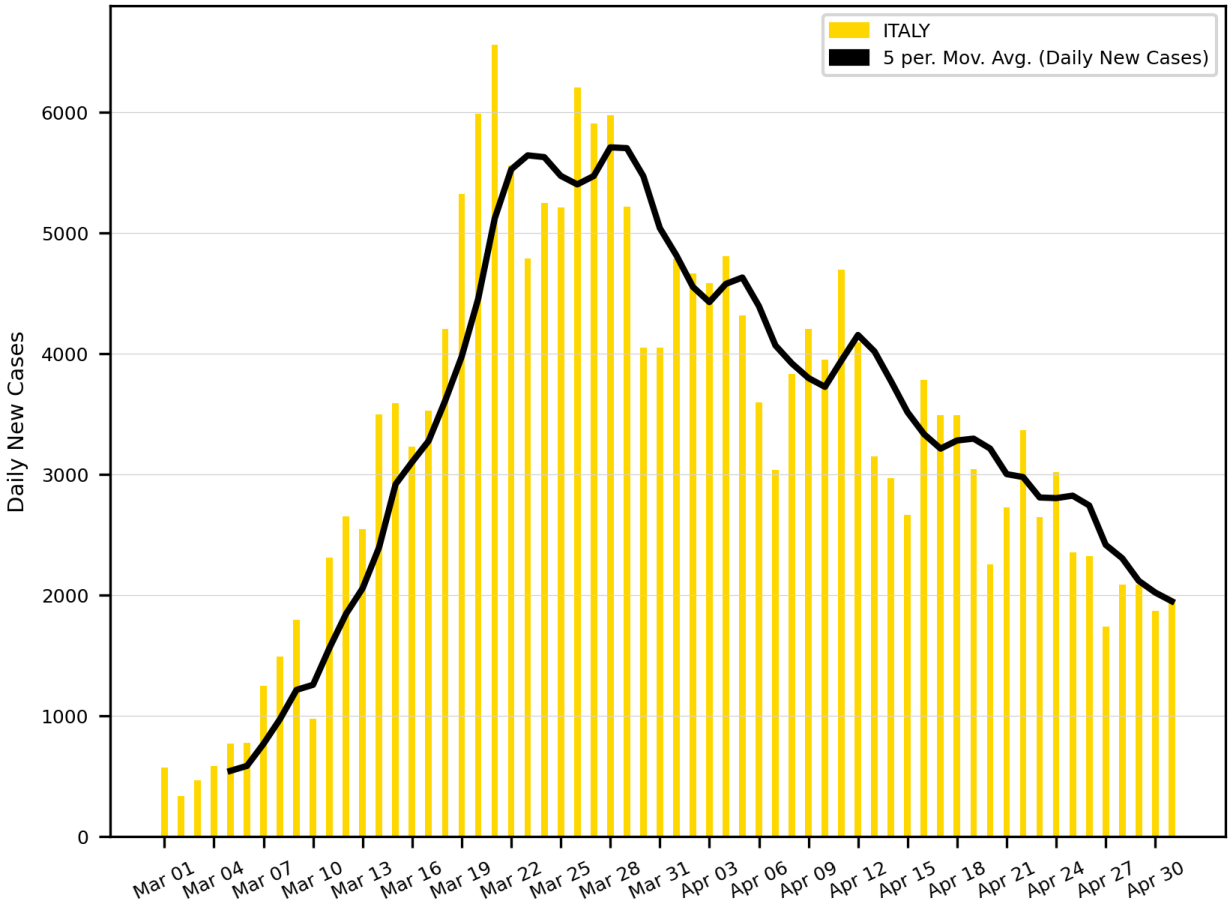


# 2. Spain

Active Cases in Spain

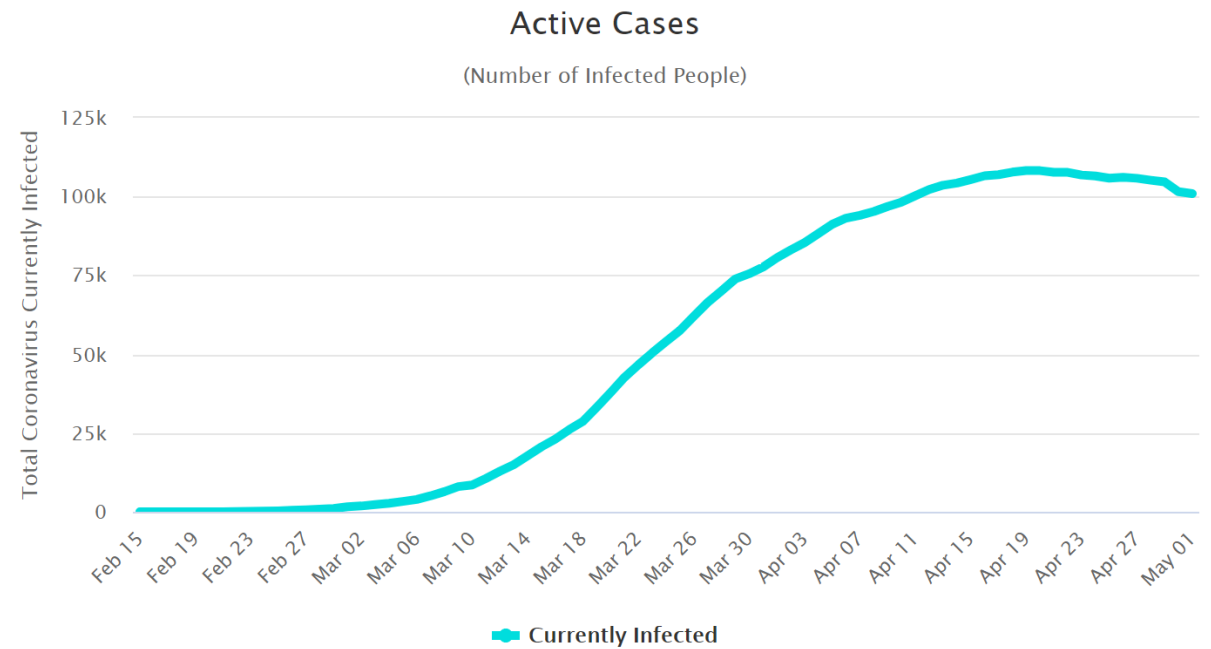


5-Day Moving Average Trendline

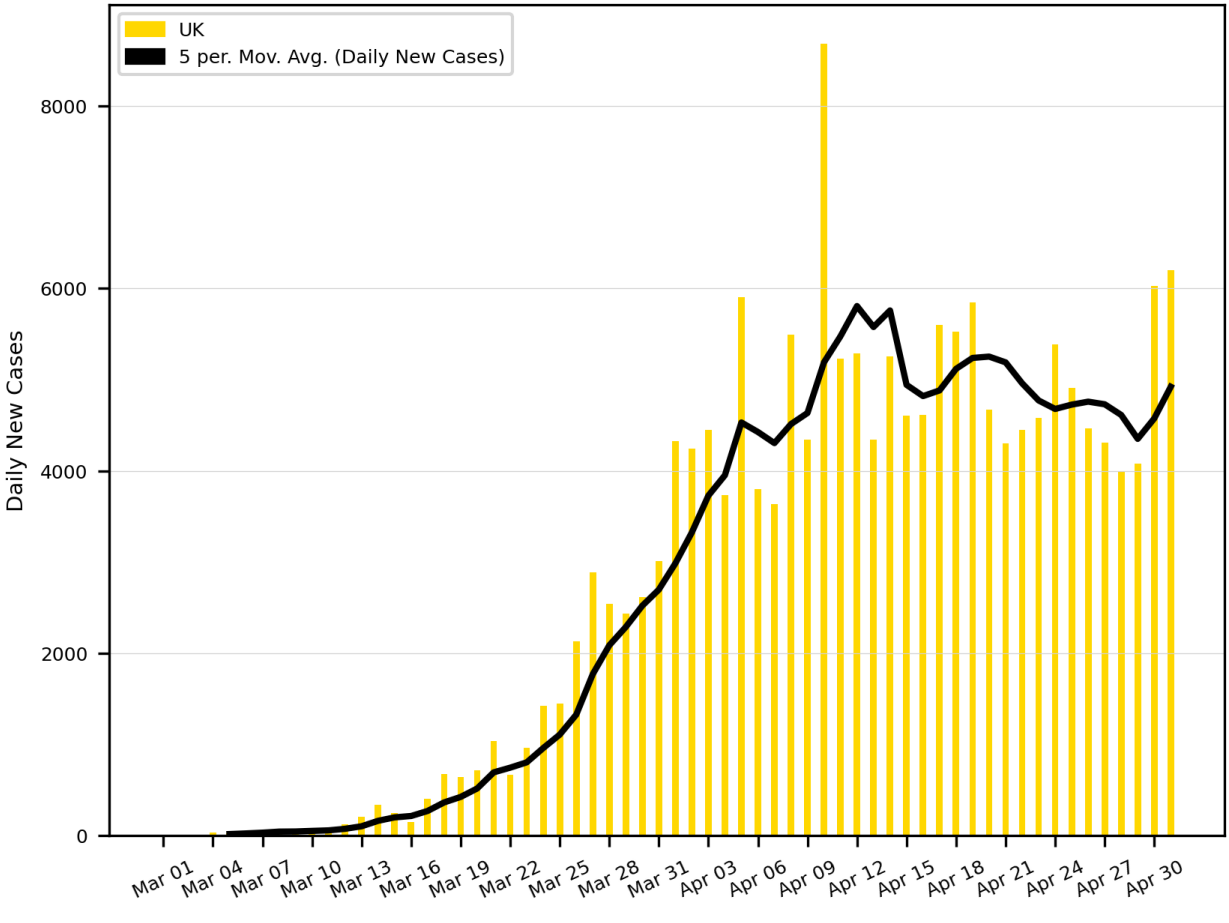


# 3. Italy

Active Cases in Italy



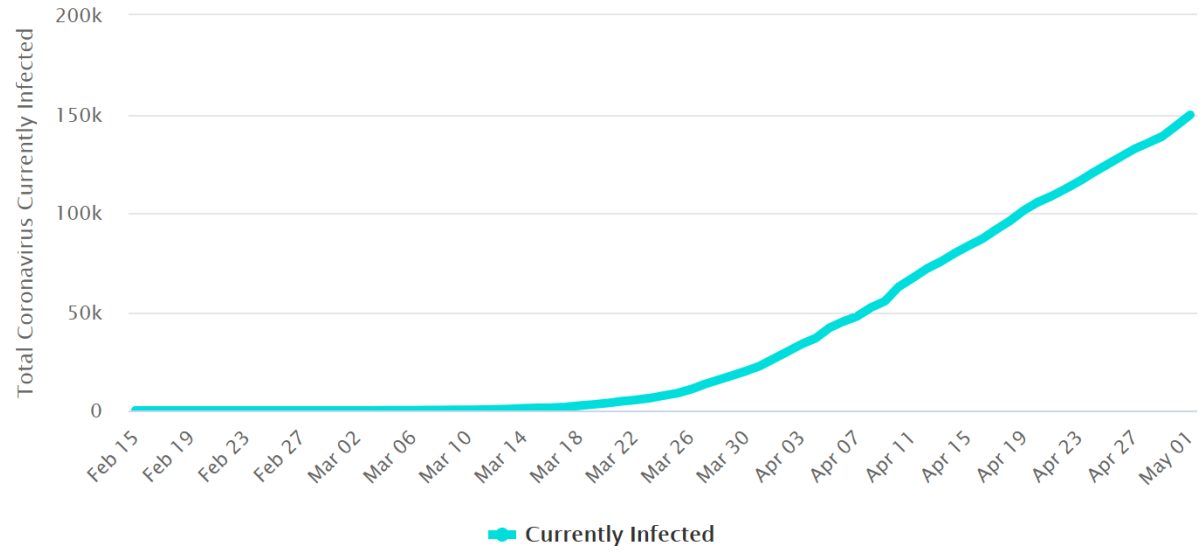
### 5-Day Moving Average Trendline



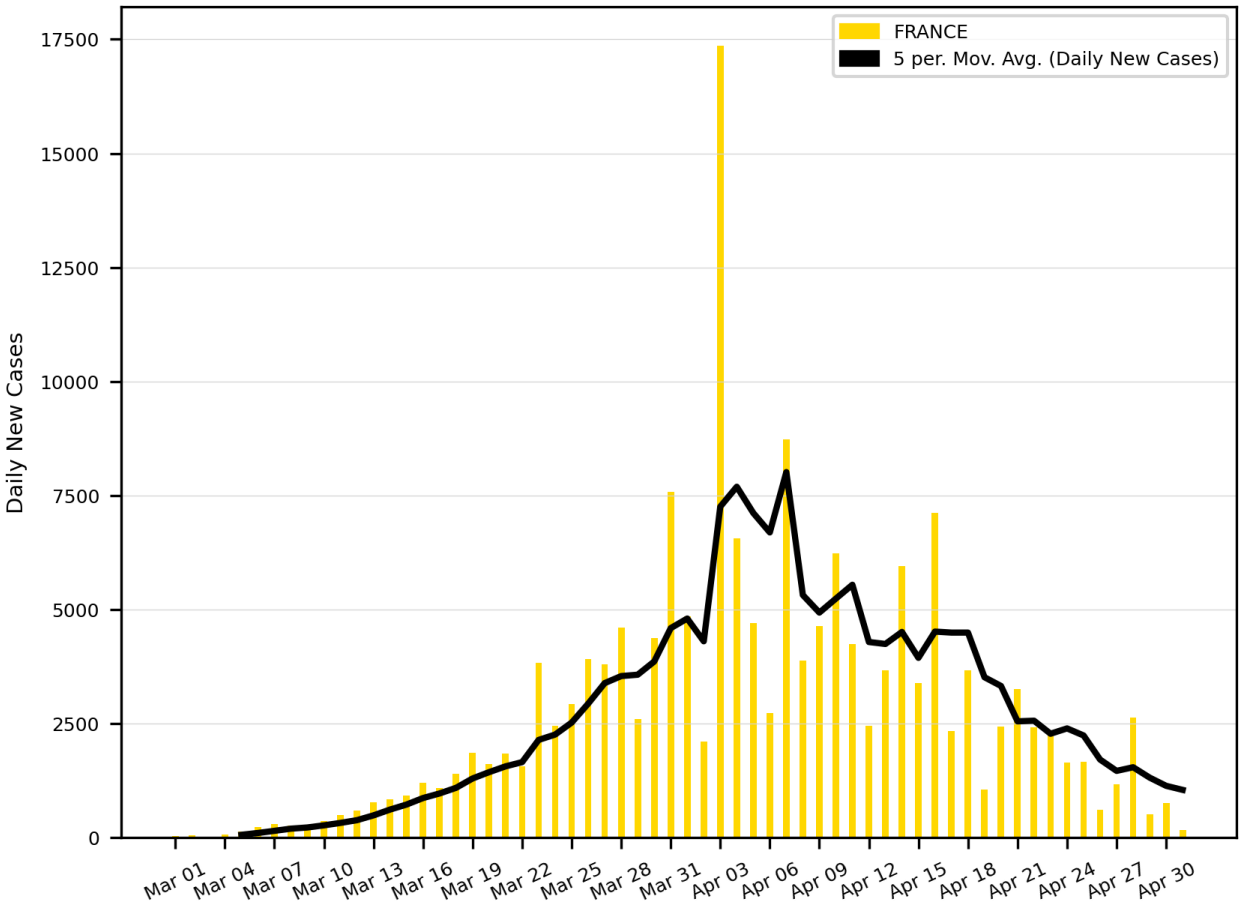
4. UK

### Active Cases in the United Kingdom

Active Cases  
(Number of Infected People)

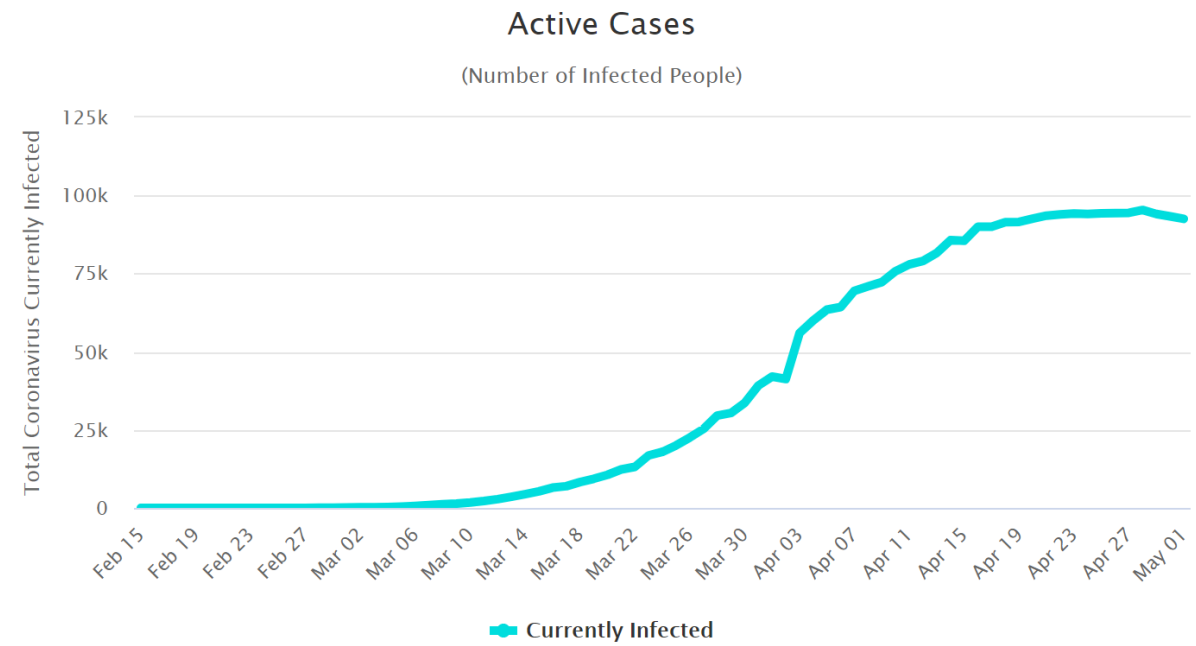


5-Day Moving Average Trendline

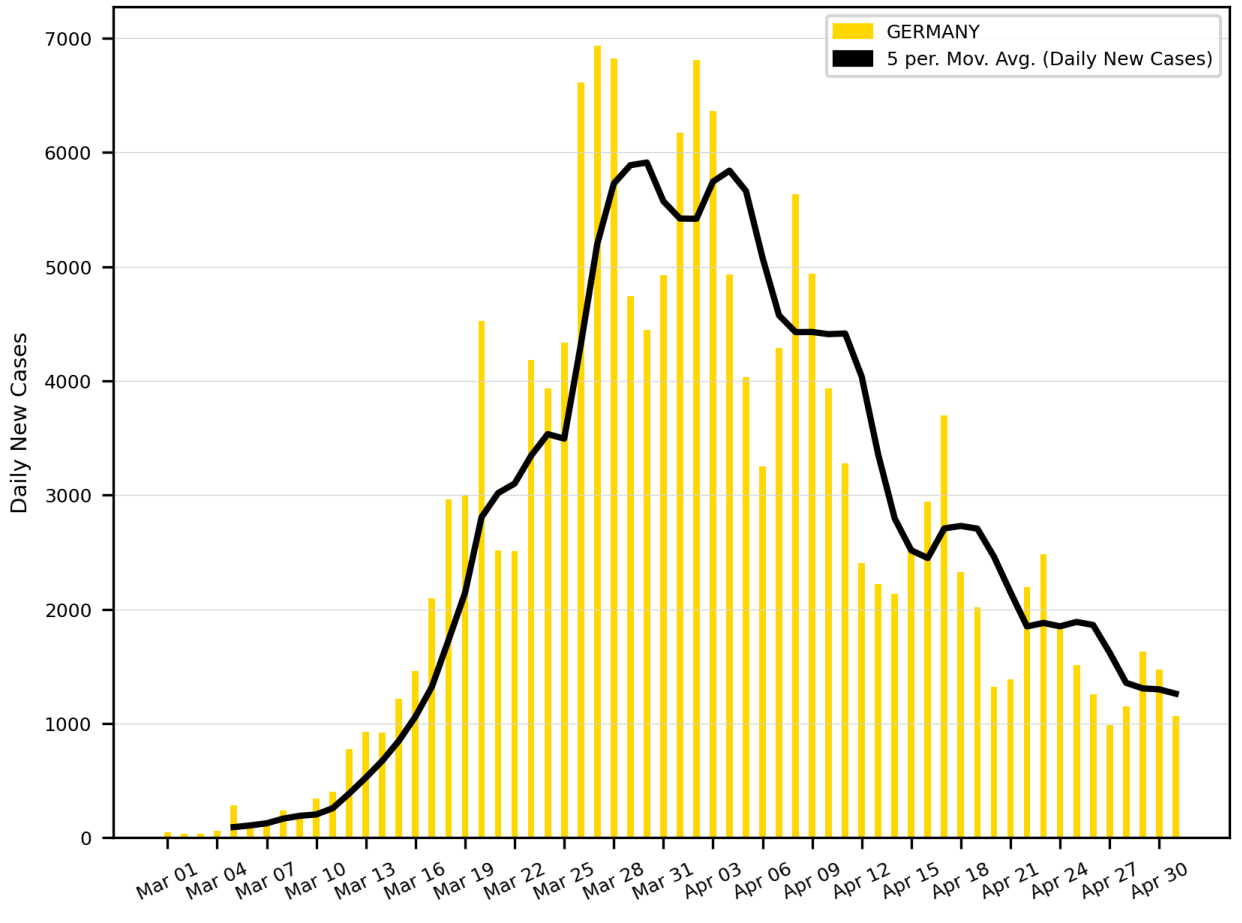


# 5. France

Active Cases in France



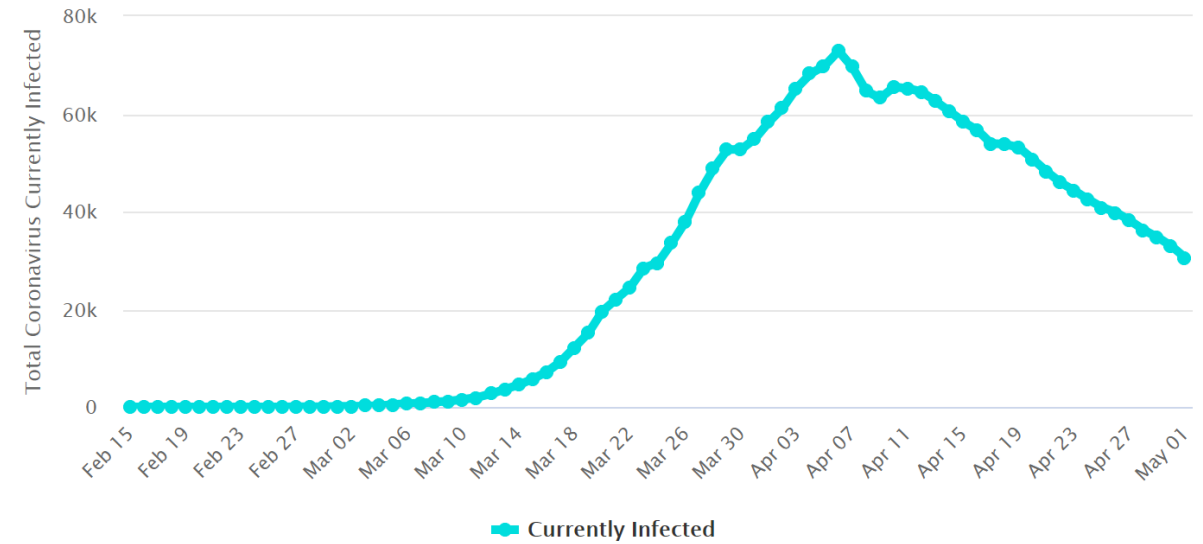
5-Day Moving Average Trendline



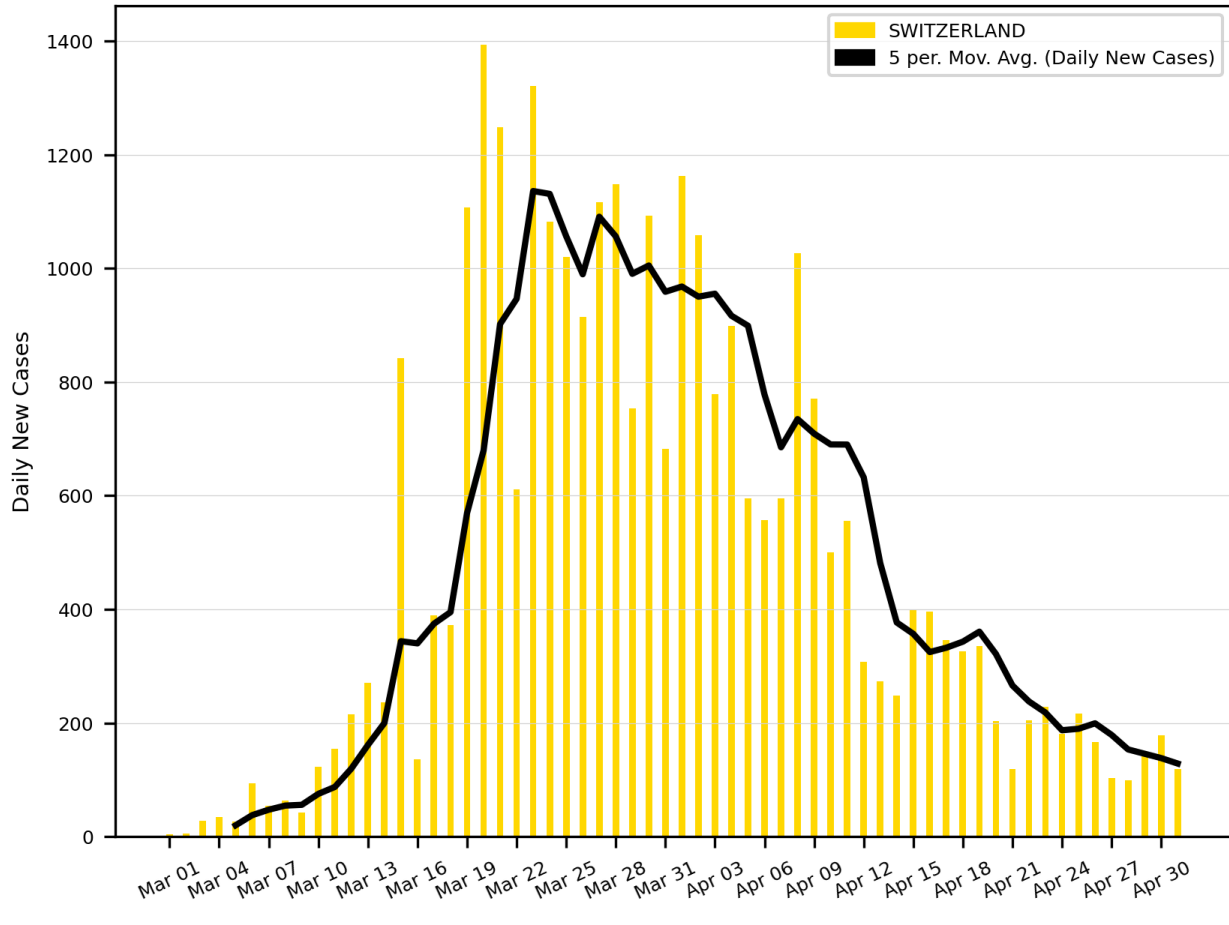
# 6. Germany

Active Cases in Germany

Active Cases  
(Number of Infected People)



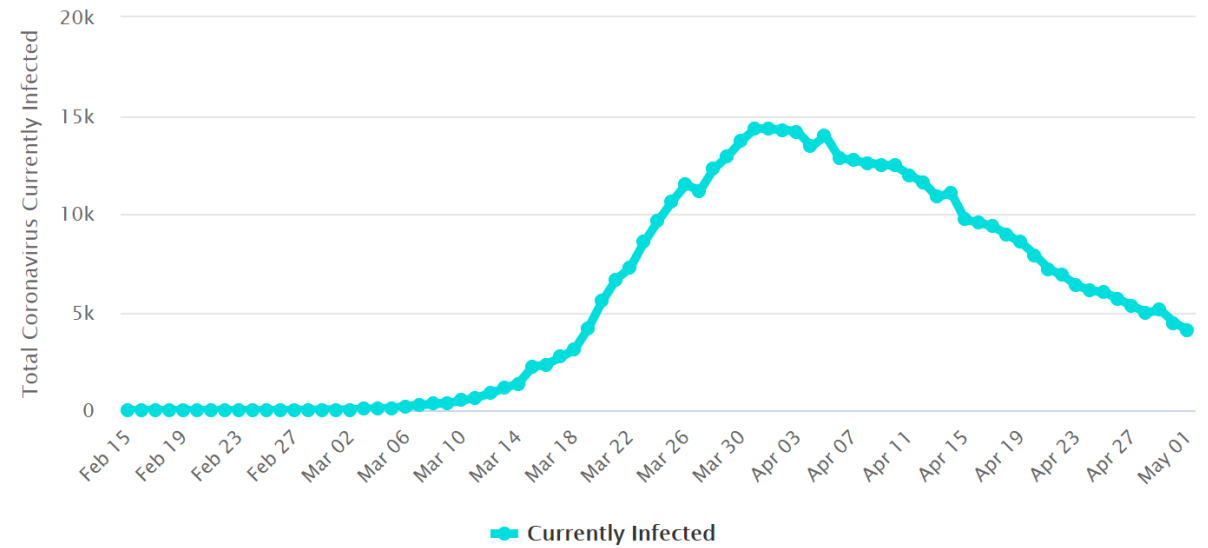
### 5-Day Moving Average Trendline



# Switzerland

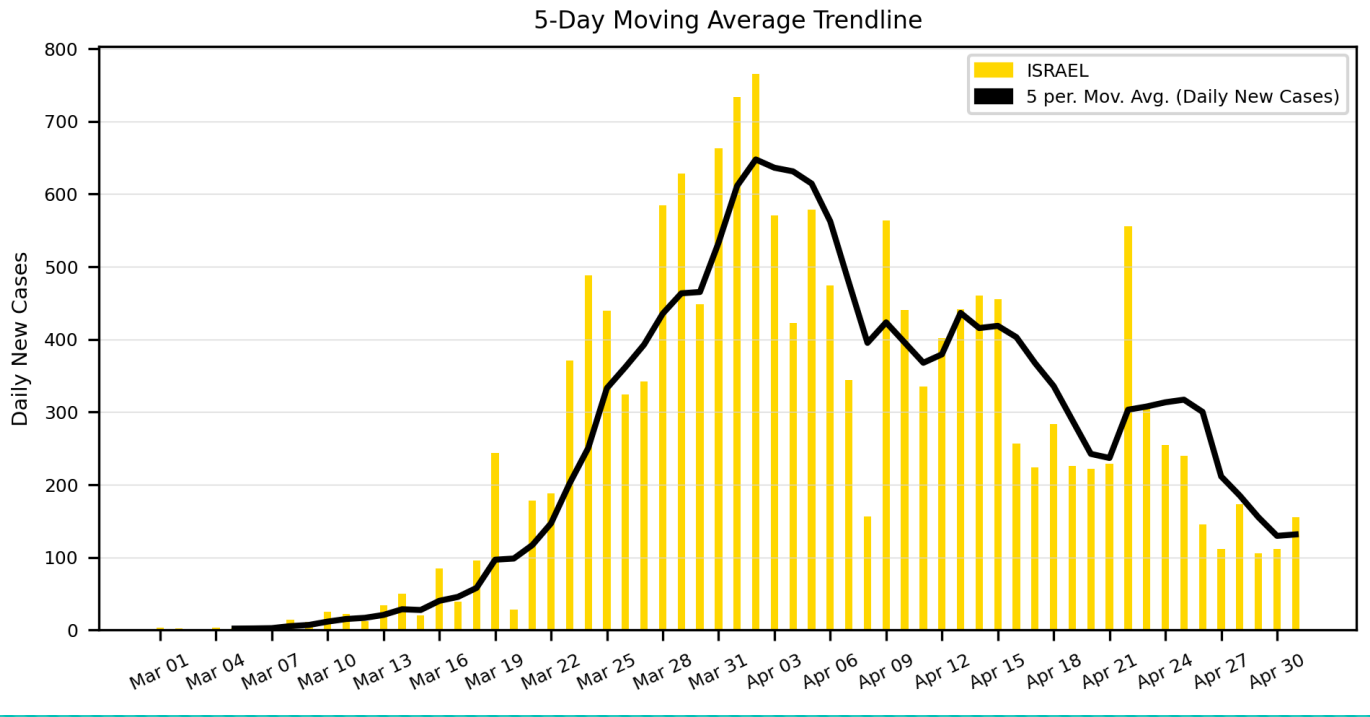
### Active Cases in Switzerland

#### Active Cases (Number of Infected People)

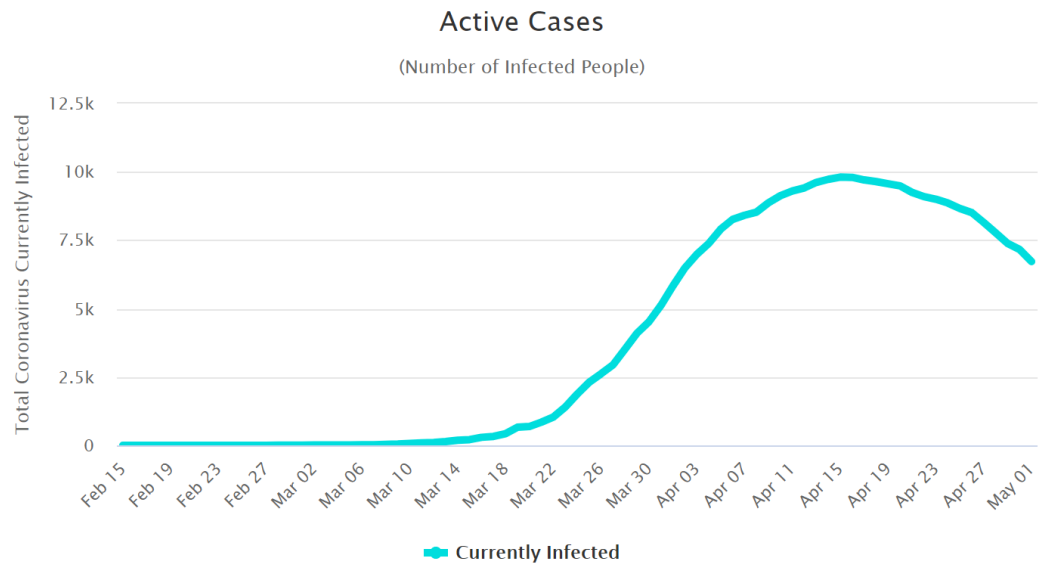




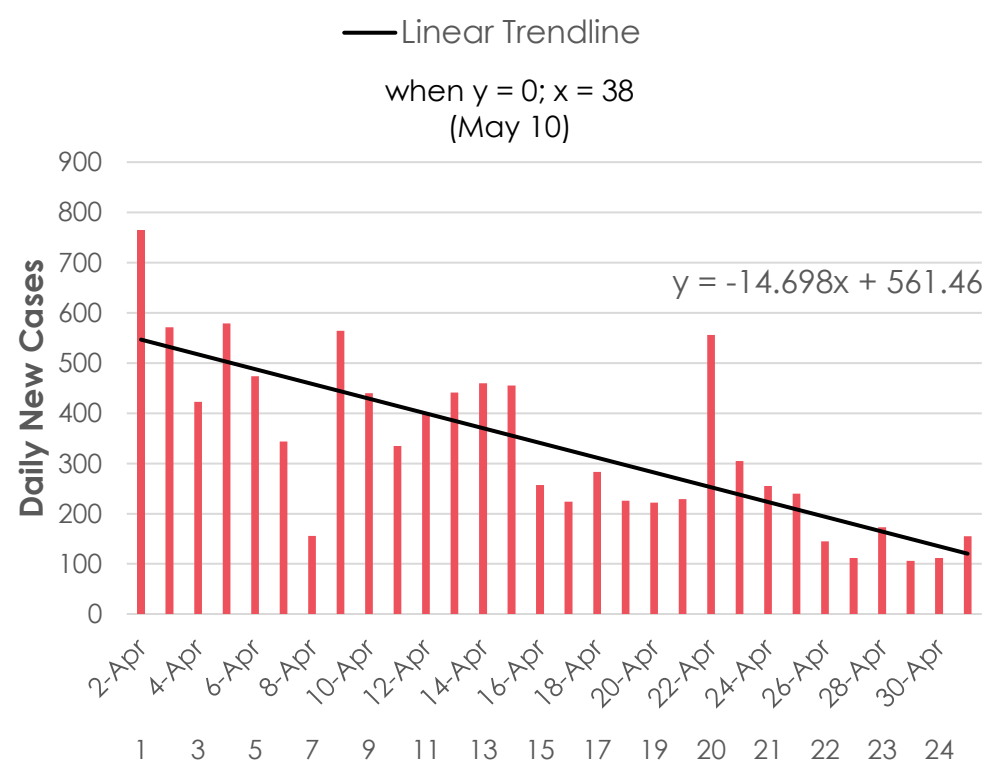
# Israel



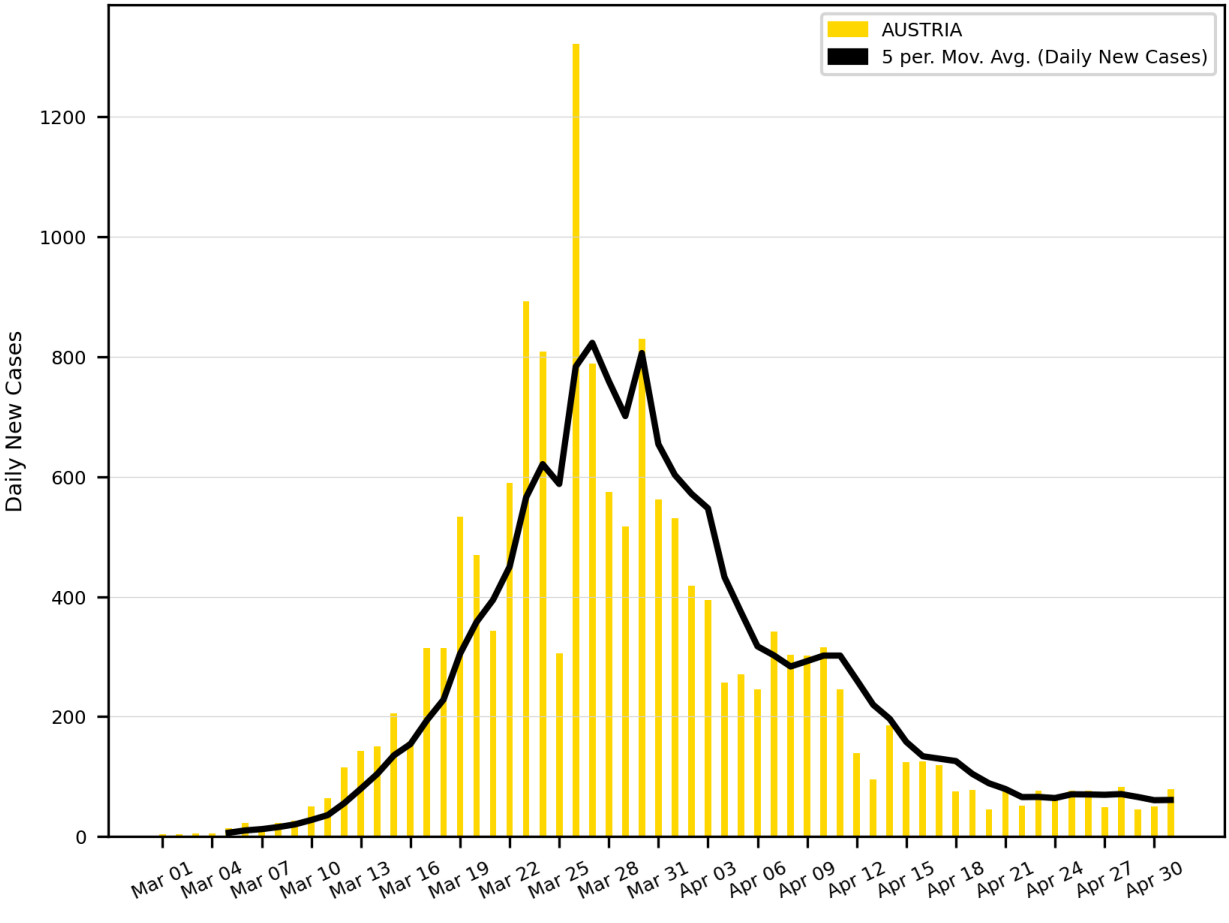
## Active Cases in Israel



### Israel Bar Chart of Daily New Cases from Peak till Today

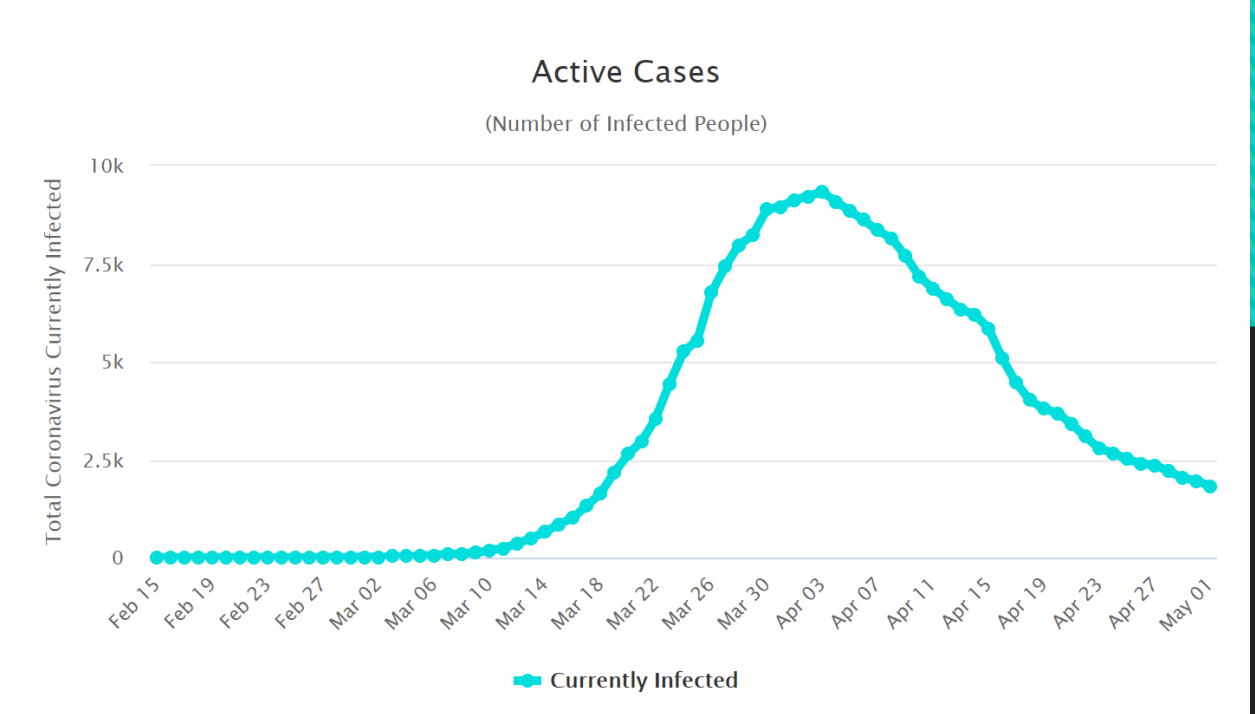


### 5-Day Moving Average Trendline



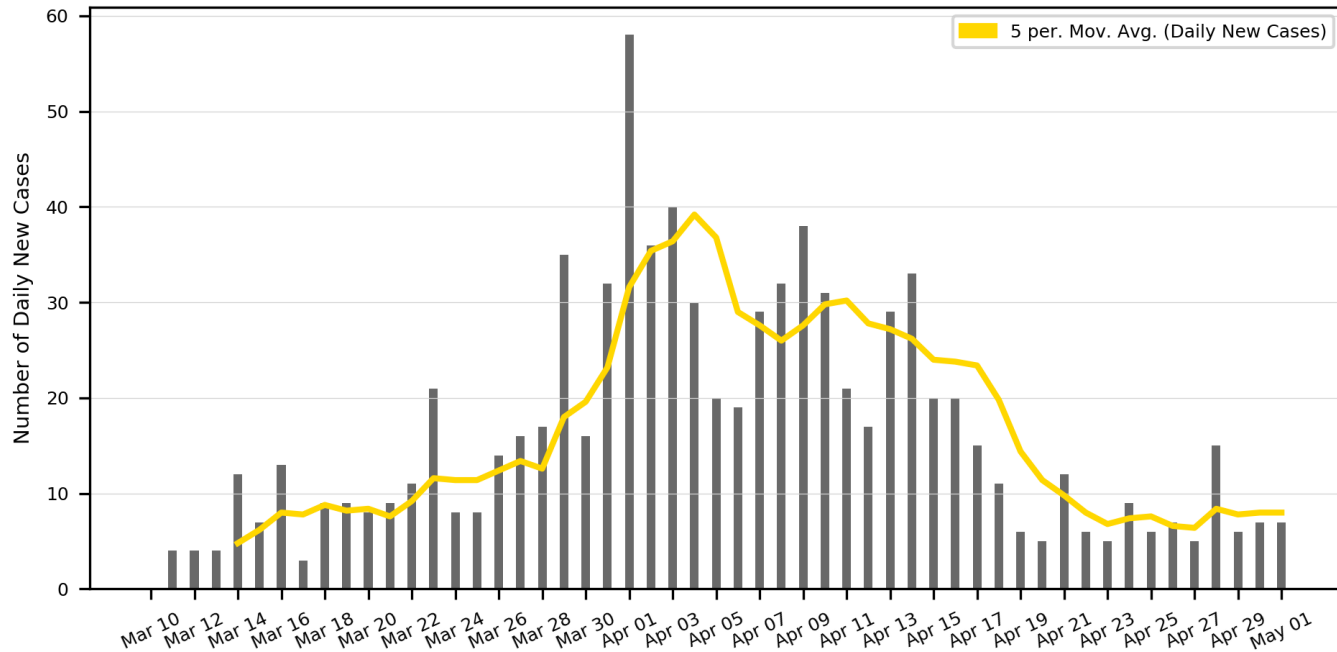
# Austria

### Active Cases in Austria

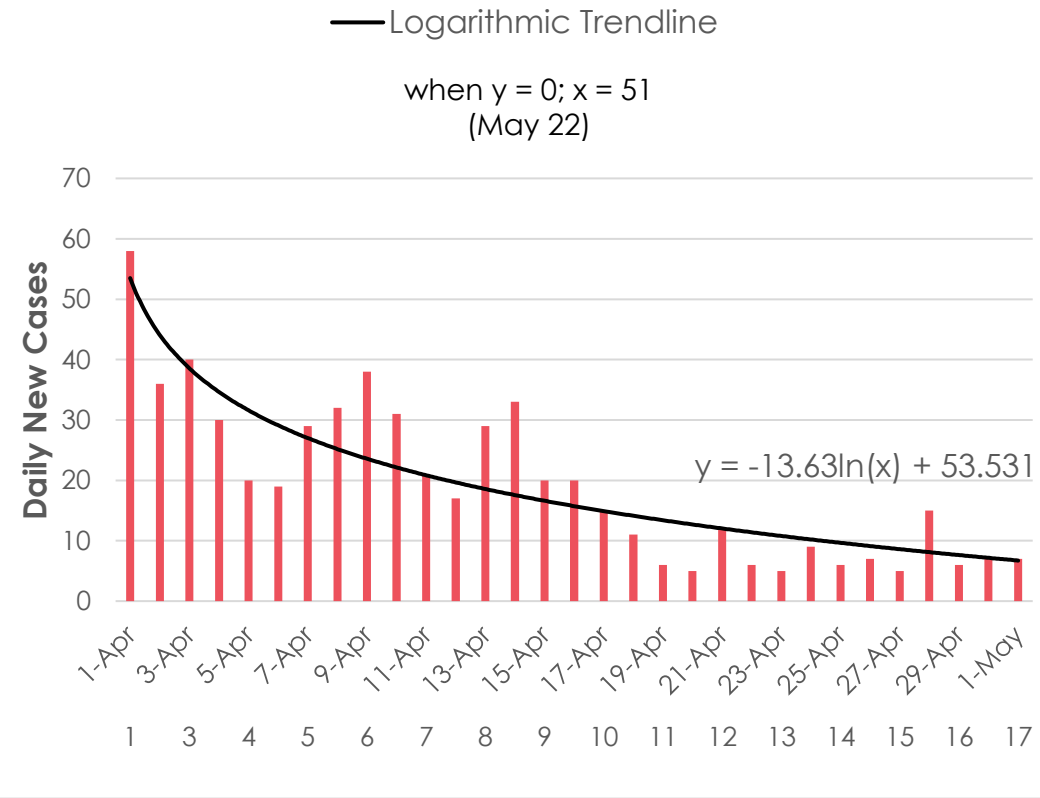


# Cyprus

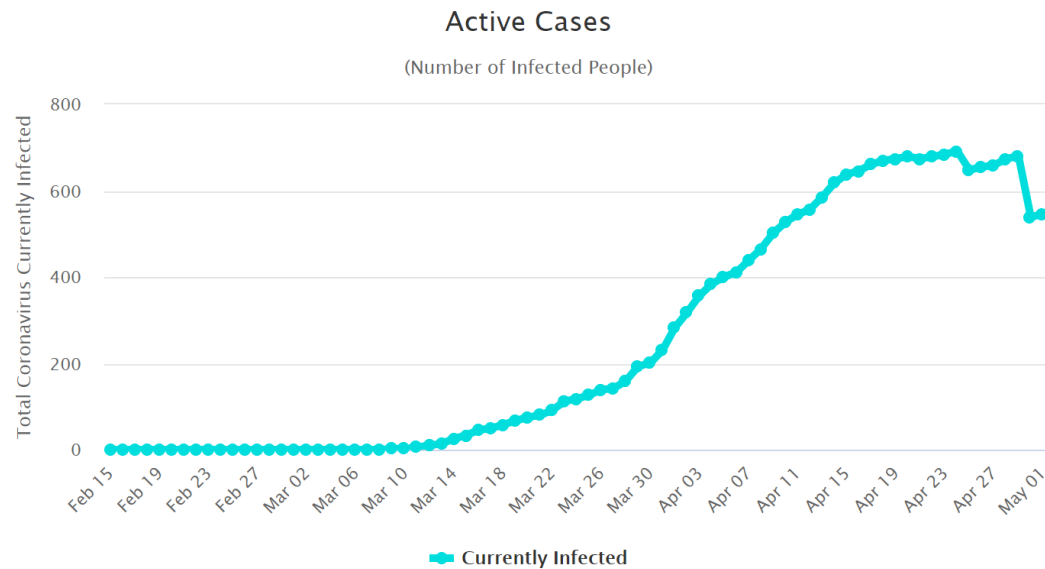
Daily New Cases in CYPRUS



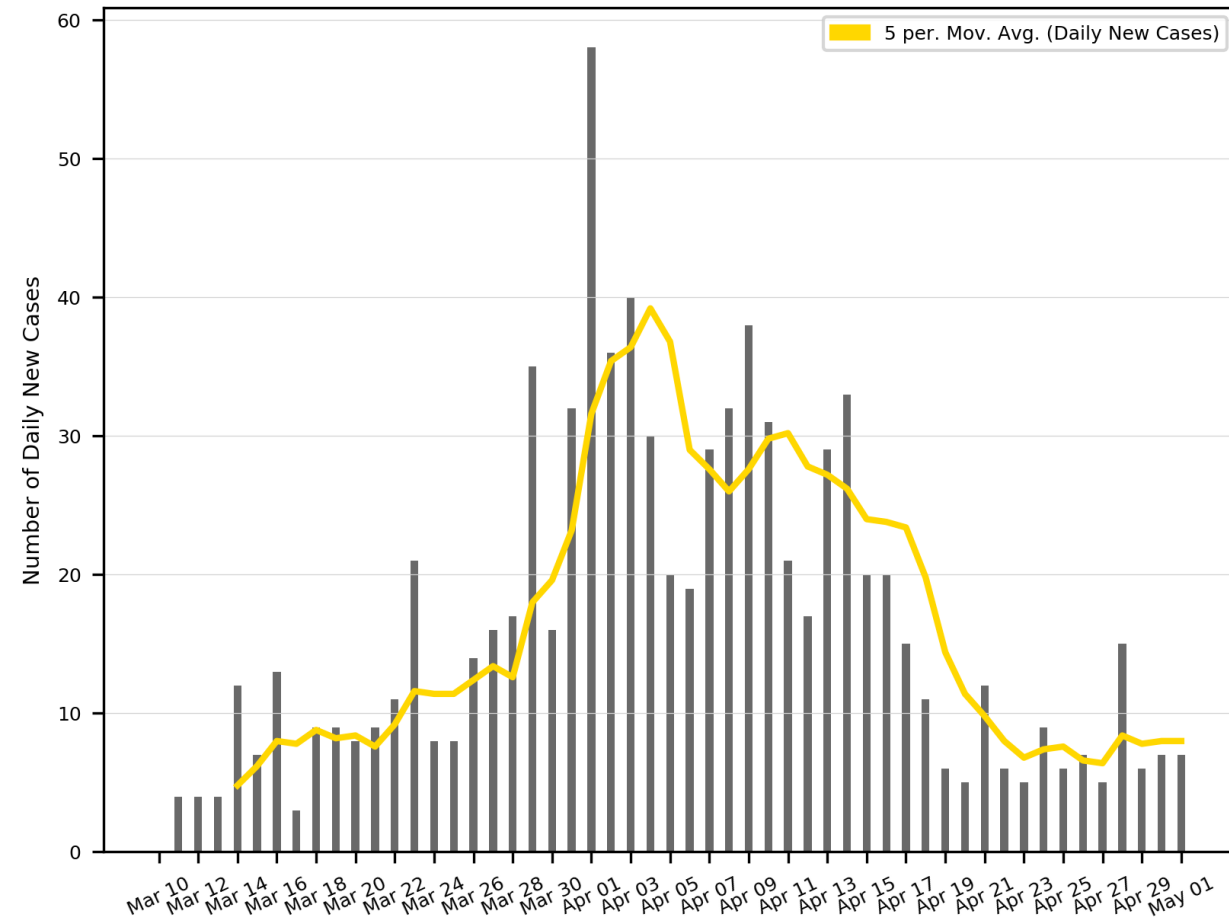
Cyprus Bar Chart of Daily New Cases from Peak Till Today



Active Cases in Cyprus



Daily New Cases in CYPRUS

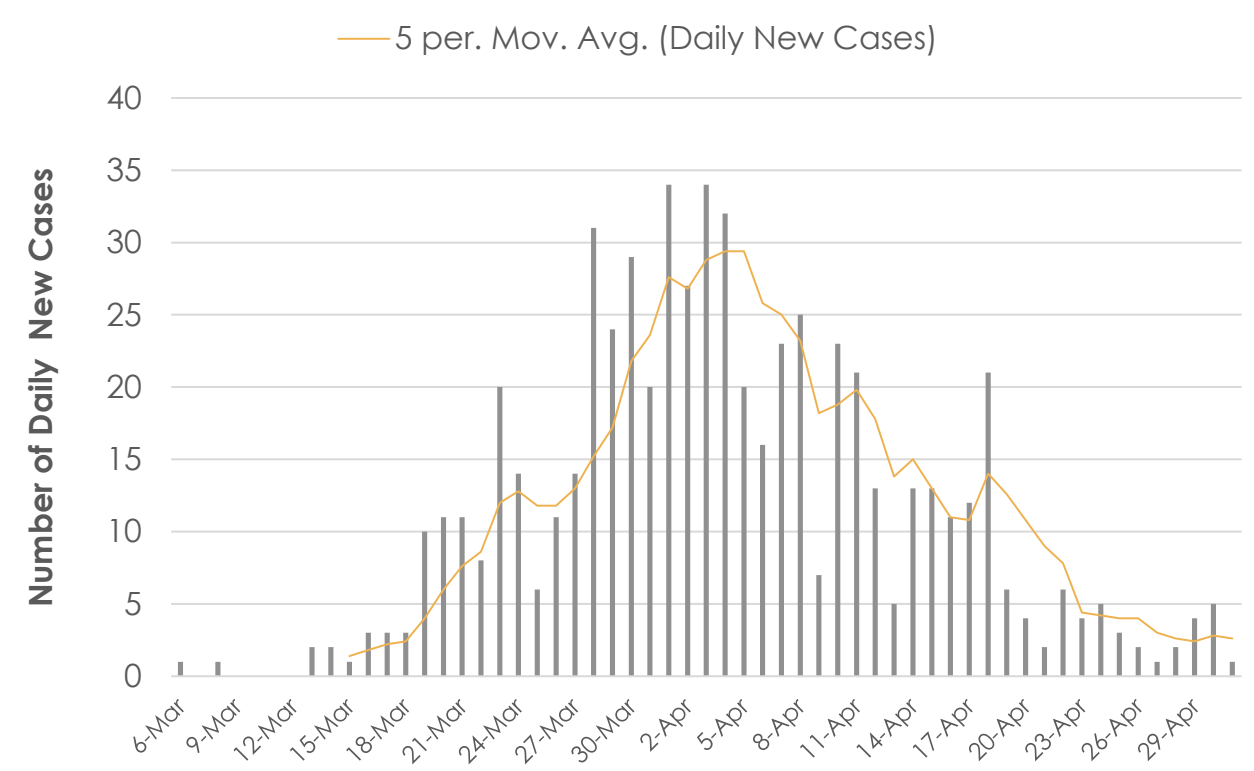


# Cyprus

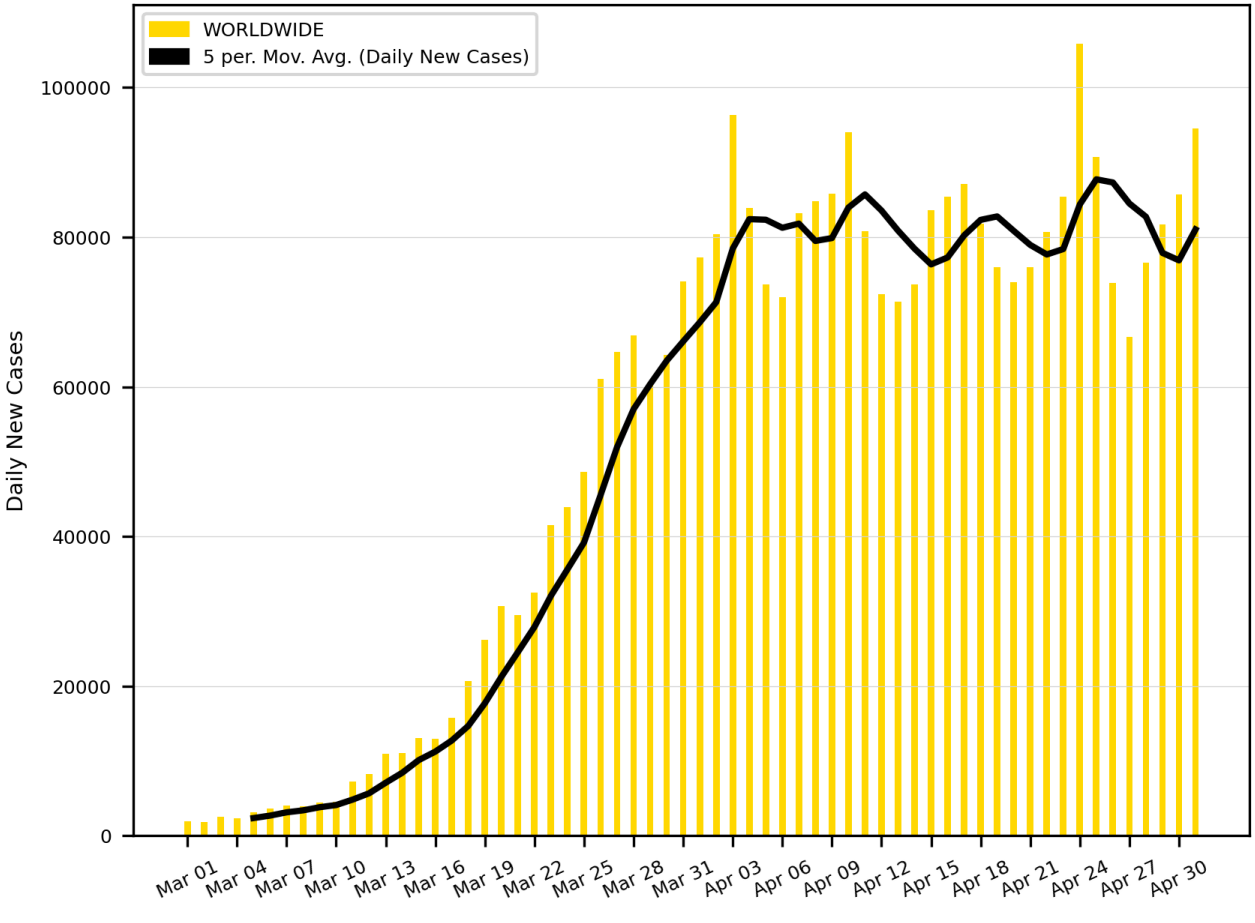
Correlation,  $r$  (Between Cyprus and Hawaii) = 0.710  
 $r$  is significant at  $\alpha = 5\%$

# Hawaii

Daily New Cases in Hawaii



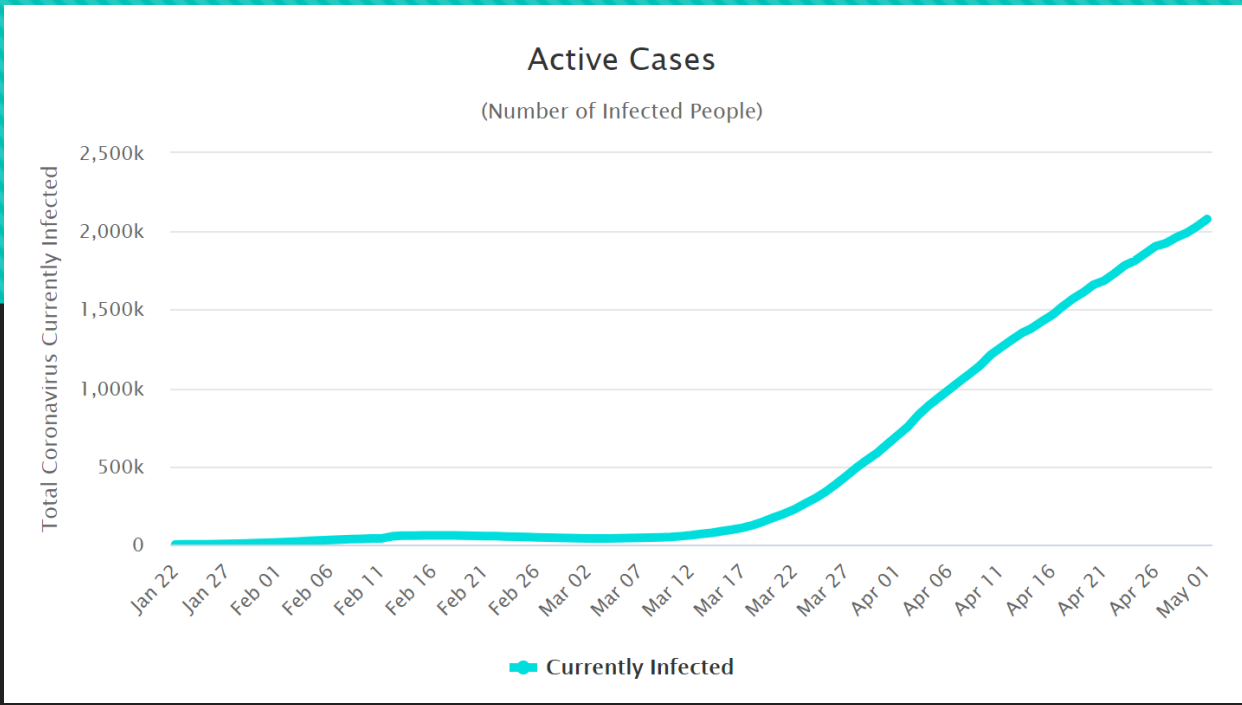
5-Day Moving Average Trendline



# Worldwide




Active Cases

(Number of Infected People)



Currently Infected

	Average of Daily New Cases from Last Five Days	Population	Pop./10m	Cut-off of COVID daily cases such that COVID death rate = present Influenza death rate	Linear Regression	Logarithmic Regression
<b>Spain</b>	3,272	46,751,178	4.675118	519	7/01/2020	1/30/2021
<b>Italy</b>	1,951	60,479,460	6.047946	671	5/25/2020	2/21/2021
<b>Germany</b>	1,261	83,730,512	8.373051	929	5/09/2020	6/22/2020
<b>Switzerland</b>	129	8,641,938	0.864194	96	5/05/2020	6/07/2020
<b>Israel</b>	132	8,628,141	0.862814	96	5/10/2020	7/15/2020
<b>Cyprus</b>	8	1,205,766	0.120576	13	5/03/2020	5/22/2020
<b>France</b>	1,049	65,247,490	6.524749	724	5/02/2020	5/18/2020

 COVID death rate < Influenza death rate  
 Regression OK  
 Regression Not OK